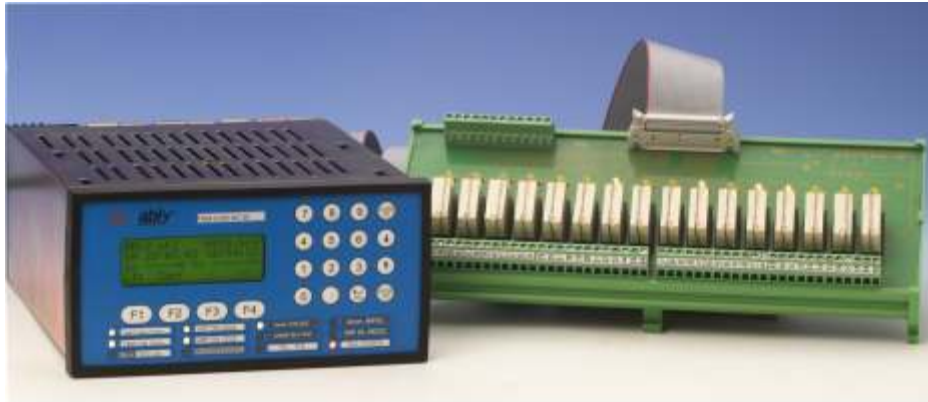


+

# TR-88

**INCA-5**  
**Attachment and Detachment**  
**Electrical Loads**



## Application:

Telephone exchanges

Data Center

Power center

Hospitals

+

INCA-5 operating downstream of the exchange network generator retains the power drawn by the consumers within the limits availability provided by generators.

Executes the inclusion / exclusion of up to  
**12 loads with priority, on 3 levels**, individually  
defined for each loads.

## TECHNICAL DATA

Device TR-88 INCA-5 formed by:  
 Front panel with backlit LCD (4x20) display keyboard  
 programming and functional, 12 leds.  
 CPU 16 bit with clock calendar, predisposition for serial  
 communication module  
 module for 24 digital inputs  
 module for 16 digital outputs and 10 digital inputs  
 module for 16 digital outputs and 10 digital inputs  
 power supply module 20÷59 Vdc (other voltages available)

## ORDER CODES

TR-88 INCA-5 detachment and attachment of 12 16 relays + 10 digital inputs module. Din-omega  
 electrical loads. Feeding 48Vdc. RS-485 Modbus.

**Cod. 801X0150**

mounted, dimension. W 285,D.114,H59 mm, maximum  
 cable section 1,5mmq

**Cod. 70PG7010**

TR-88 INCA-5 detachment and attachment of 12  
 electrical loads. Feeding 48Vdc.

**Cod. 801X0151**

Flat cable 34 poles Lg. 2000 mm.

**Cod. 60P2Z020**

TR-88 INCA-5 detachment and attachment of 12 Three Phase Power Meter for mono/three phases  
 electrical loads. Feeding 110Vdc. systems. Din bar mounting (6). Power supply 115 / 230  
 Vac

**Cod. 801X0152**

**Cod. 4M000040**

Terminal block, DIN/OMEGA mounted

**Cod. 12G00019**

Shielded cable for connecting MGE-3 Lg.2000.

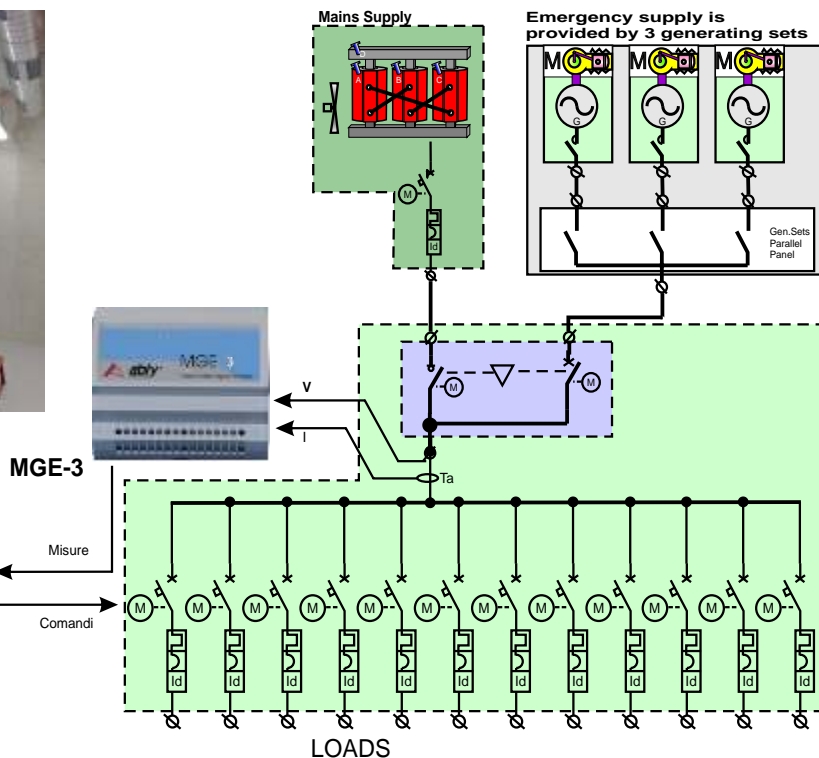
**Cod. 60P33040**

Flat cable 26 poles Lg. 2 mt.

**Cod. 60P2Q000**



TR88- INCA



INCA\_5\_REV\_A\_ENG



**Ably s.r.l.** 40050 Funo di Argelato (Bologna) ITALY  
 Via de' Giudei 41/43  
 Tel: +39 (051) 860064; Fax: +39 (051) 860074

e-mail: [ably@ably.it](mailto:ably@ably.it)  
 web: <http://www.ably.it>

AZIENDA CON SISTEMA DI GESTIONE  
 PER LA QUALITÀ CERTIFICATO DA DNV  
 = UNI EN ISO 9001:2008 =