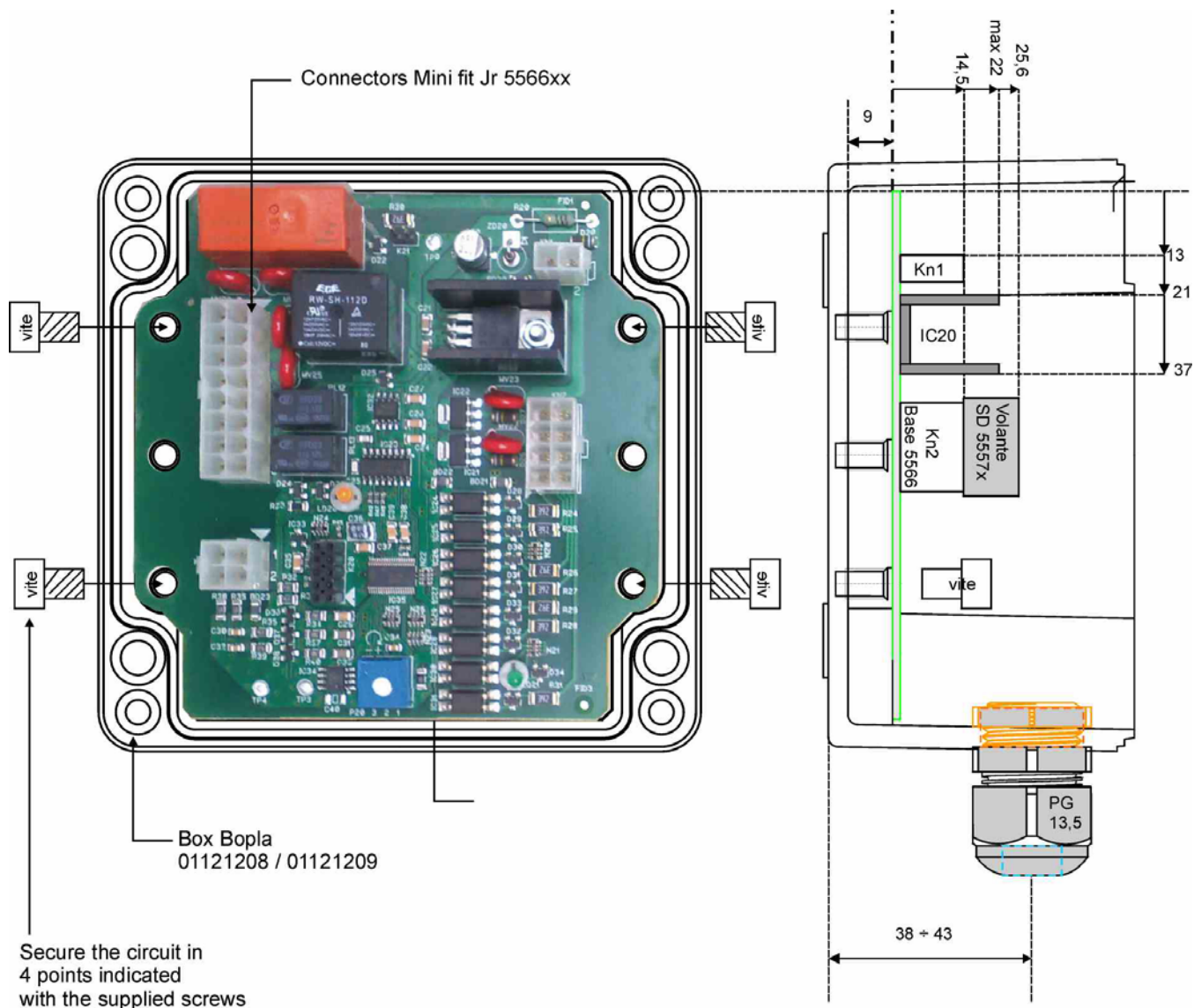


## Microcontroller module for control and protection





#### Features:

	Description	note
CPU	Microcontroller with 16Kb Flash, 1Kb RAM, ADC, Serial, Watch dog - The firmware can be downloaded via PC programming tool	
Data memory	1Kb Flash memory data protected by checksum	
Trimmer	N° 2 equipped with the initials CS are used to set the timing	
Push-button	It is identified by the initials PCB, it is used to reset the bistable relay start-up phase.	
LED signals on PCB.	- Power ON (power supply and microcontroller working ok) - Activation status of the relays (relay commanded) - State of the active inputs	
Serial communications	Connection for download the firmware via tool	
	Serial communication for remote HMI device or expansion	
Programming language	The firmware is written in C, C + +	
Identification	According to the ns. standard with 8-character alphanumeric code to: P.N. = part number S.N. = serial number	
Supply	24Vdc (18 to 32) it protected against reverse polarity	
climate conditions	Operating Temperature -10 ° C to 60 ° C Humidity 90%, provided that no condensation	

#### Ingressi/ Uscite gestiti

	Description	Note
Digitali Inputs	N° 4 from external PNP	
	N° 2 I / O Input + output PNP static flow rate (0.5 A) operated by Sw (also suitable for counting inputs at frequencies up to 5kHz)	
Analog Inputs	N° 2 per trasduttori con range 0÷10V, risoluzione 10Bit, all'occorrenza convertibili da Sw in ingressi digitali	
Relays output	N° 1 by bistable relay with 2 changeover contacts 5 A resistive load	
	N° 2 from monostable relay 1 changeover contact 5 A resistive load	
	N° 1 from monostable relay 1 changeover contact 5 A resistive load	
	Damper Diode on all relay contacts	
Connections	Using Mini-fit connectors with an identifying symbol on the PCB	

#### Safety features

- Watch dog, in case of failure it stops and tries to restore the proper functioning of the microcontroller.
- Implementation of the data checksum switched on and during operation

#### Applications:

Protection and control, particularly suitable for industrial vehicles, construction machinery and agricultural machinery.

For more information please contact us at our headquarters:

**ABLY S.r.l.**

Via de' Giudei 41/43

40050 FUNO DI ARGELATO (BO) ITALY

Tel. +39 051/860064

Fax +39 051/860074

sito: <http://www.ably.it>

e-mail [ably@ably.it](mailto:ably@ably.it)